



TUBI - BOCCOLE

TUBI FLESSIBILI ALTE PRESSIONI SAE 100 R2 "AT" HYDRAULIC HOSES

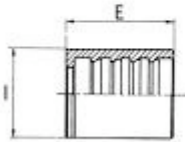


Ø	Trecce	Press:Es. Kg/cm2	Ø Int.	Ø Est.	ART.
1/4	1	190	6.3	13.0	9020
5/16	1	175	8.0	15.0	9021
5/16	2	300	8.0	17.5	9022
3/8	1	155	9.5	17.8	9023
3/8	2	280	9.5	19.6	9024
1/2	1	140	12.7	20.8	9025
1/2	2	245	12.7	22.8	9026
3/4	2	160	19.0	28.8	9027

BOCCOLE PER RACCORDI A PRESSARE - BUSHING FOR HYDRAULIC HOSES TO BE PRESSED TUBO SAE 100 R1AT



Diametro Tubo Pollici	Tubo mm	E	I	ART.
5/16"	8	30	21	9991
3/8"	10	32	24	9992
1/2"	13	34	28	9993

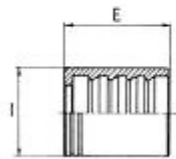


9

BOCCOLE PER RACCORDI A PRESSARE - BUSHING FOR HYDRAULIC HOSES TO BE PRESSED TUBO SAE 100 R2AT



Diametro Tubo Pollici	Tubo mm	E	I	ART.
3/8"	10	32	26	9995
1/2"	13	34	29	9996
3/4"	19	42,5	36	9997



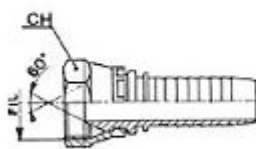
RACCORDI



RACCORDO FILETTATO FEMMINA DIRITTO A PRESSARE STRAIGHT FEMALE



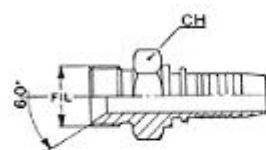
	Diametro Tubo		Filetto	Chiave	ART
	Pollici	mm			
	1/4"	6	1/4"	19	5102
	1/4"	6	3/8"	22	5103
	1/4"	6	14x1,5	19	5104
	1/4"	6	16x1,5	22	5105
	5/16"	8	3/8"	22	5106
	3/8"	10	3/8"	22	5107
	3/8"	10	1/2"	27	5108
	3/8"	10	16x1,5	22	5180
	3/8"	10	18x1,5	24	5110
	3/8"	10	22x1,5	27	5111
	1/2"	13	3/8"	22	5190
	1/2"	13	1/2"	27	5113
	1/2"	13	18x1,5	24	5114
	1/2"	13	20x1,5	27	5115
	1/2"	13	22x1,5	27	5116
	3/4"	19	3/4"	32	5117



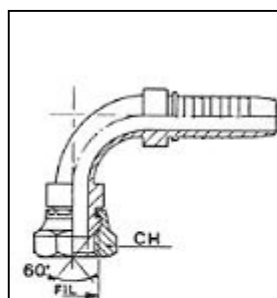
RACCORDO FILETTATO MASCHIO A PRESSARE STRAIGHT MALE



	Diametro Tubo		Filetto	Chiave	ART
	Pollici	mm			
	1/4"	6	1/4"	19	5118
	1/4"	6	3/8"	22	5119
	1/4"	6	14x1,5	19	5120
	1/4"	6	16x1,5	22	5121
	5/16"	8	3/8"	22	5122
	3/8"	10	3/8"	22	5123
	3/8"	10	16x1,5	22	5124
	3/8"	10	18x1,5	24	5125
	3/8"	10	22x1,5	27	5126
	3/8"	10	1/2"	27	5127
	1/2"	13	3/8"	22	5128
	1/2"	13	1/2"	27	5129
	1/2"	13	18x1,5	24	5130
	1/2"	13	20x1,5	27	5131
	1/2"	13	22x1,5	27	5132
	3/4"	19	3/4"	32	5133



RACCORDO FEMMINA CURVO 90° A PRESSARE STRAIGHT FEMALE 90°



	Diametro Tubo		Filetto	Chiave	ART.
	Pollici	mm			
	1/4"	6	1/4"	19	5134
	1/4"	6	3/8"	22	5135
	1/4"	6	14x1,5	19	5136
	1/4"	6	16x1,5	22	5137
	5/16"	8	3/8"	22	5138
	3/8"	10	3/8"	22	5139
	3/8"	10	1/2"	27	5140
	3/8"	10	16x1,5	22	5141
	3/8"	10	18x1,5	24	5142
	3/8"	10	22x1,5	27	5143
	1/2"	13	3/8"	22	5144
	1/2"	13	1/2"	27	5145
	1/2"	13	18x1,5	24	5146
	1/2"	13	20x1,5	27	5147
	1/2"	13	22x1,5	27	5148
	3/4"	19	3/4"	32	5149

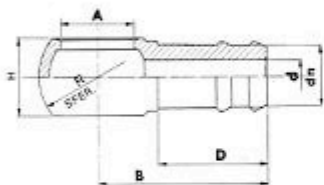


9

RACCORDO PORTAGOMMA CONNECTION



R	H	d	D	B	dn	A	ART.
17	10	4	16	28	6	1/8	9701
17	10	5	16	28	8	10	9702
20	12	6	18	31	8	12	9703
20	12	7	18	31	10	12	9704
24	14	4	18	32	6	1/4	9705
24	14	6	18	32	8	1/4	9706
24	14	7	22	38	10	1/4	9707
24	14	6	18	32	8	14	9708
24	14	7	25	40	10	14	9709
24	14	9	25	40	12	14	9710
28	18	9	22	41	13	16	9711
28	18	12	25	41	16	16	9712
28	18	7	22	41	10	3/8	9713
30	18	9	22	41	13	3/8	9714
30	20	12	25	41	16	3/8	9715
32	22	7	22	42	10	18	9716
32	22	9	22	42	13	18	9717
32	22	12	25	42	16	18	9718
35	22	9	23	47	13	1/2	9719
35	22	12	25	47	16	1/2	9720

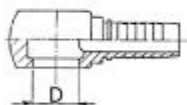


9

RACCORDO CON ATTACCO OCCHIO A PRESSARE EYE FITTING



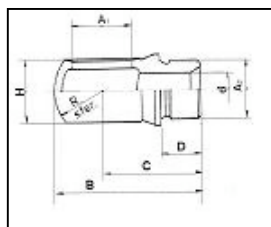
	Diametro Tubo		Attacco D	ART.
	Pollici	mm		
	1/4"	6	1/4"	5151
	5/16"	8	3/8"	5152
	3/8"	10	3/8"	5153
	1/2"	13	1/2"	5154
	3/4"	19	3/4"	5155



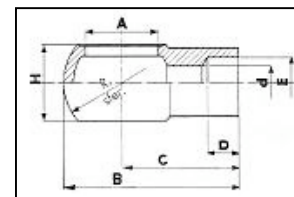
RACCORDI – BULLONI FORATI



RACCORDO OCCHIO FILETTATO THREADED EYE



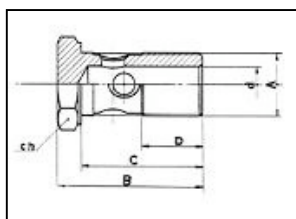
RACCORDO OCCHIO A SALDARE WELDABLE EYE



R	H	d	D	C	B	A2	A1	ART.
24	15	6	12	25	37	12x1	1/4	5946
24	15	7	12	25	37	1/4	1/4	5947
24	15	7	12	25	37	14x1,5	1/4	5948
24	15	7	12	25	37	1/4	14	5949
24	15	7	12	25	37	14x1,5	14	5950
30	20	9	12,5	27	42	16x1,5	16	5951
30	20	9	12,5	28	43	16x1,5	3/8	5952
30	20	7	12	27	42	1/4	3/8	5953
30	20	9,5	12,5	28	43	3/8	3/8	5954
30	20	10	13	29	44	18x1,5	3/8	5955
32	22	7	12	28	44	1/4	18	5956
32	22	9,5	12,5	30	46	3/8	18	5957
32	22	10	13	30	46	18x1,5	18	5958
32	22	12	14	31	47	1/2	18	5959
35	23	9,5	12,5	33	50,5	3/8	1/2	5960
35	23	10	13	33	50,5	18x1,5	1/2	5961
35	23	12	14	34	51,5	1/2	1/2	5962
35	23	12	14	34	51,5	1/2	22	5963
35	23	13	14	34	51,5	22x1,5	22	5964
45	30	16	17	41	63,5	3/4	3/4	5965

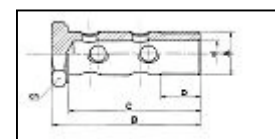
R	H	E	D	C	B	A	ART.
12	8	4	7	14	20	6	5966
12	8	5	8	16	23	8	5967
17	10	5-6	8	17	25	1/8	5968
17	10	5-6	8	17	25	10	5969
20	12	6-8	10	22	32	12	5970
24	15	10	8	24	36	1/4	5971
24	15	10	8	24	36	14	5972
30	20	12	8	26	41	16	5973
30	20	10-12	8	26	41	3/8	5974
30	20	14-16	8	26	41	3/8	5975
32	22	12-14	8	26	42	18	5976
32	22	15-16	8	26	42	18	5977
32	22	18	8	28	42	18	5978
35		14	8	29	46	20	5979
35	22,5	12-14	8	29	46	1/2	5980
35	22,5	15-16	8	29	46	1/2	5981
35	22,5	18	8	29	46	1/2	5982
45	30	20	14	41	64	3/4	5983

BULLONE FORATO BOLT WITH HOLE



ch	d	D	C	B	A	ART.
10	3	8	16	20,5	6x1	9811
12	4	9	18	23	8x1	9812
12	4	9	18	25,5	8x1,25	9813
14	5	10	20	25,5	1/8	9814
14	5	10	20	25,5	10x1	9815
14	5	12	20	25,5	10x1,25	9816
17	6	12	24	30	12x1	9817
17	6	12	24	30	12x1,25	9818
17	6	13	24	30	12x1,5	9819
18	6,5	13	27	34	1/4	9820
18	7	13	27	34	14x1,5	9821
21	9	14	32	39	16x1,5	9822
22	9	15	33	40	3/8	9823
24	10	16	36	44	18x1,5	9824
27	11	18	39	47	20x1,5	9825
27	12	18	39	47	1/2	9826
32	16	20	48	58	3/4	9827

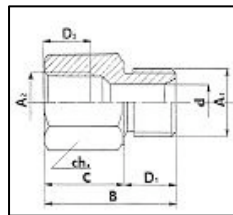
BULLONE FORATO DOPPIO BOLT WITH DOUBLE HOLE



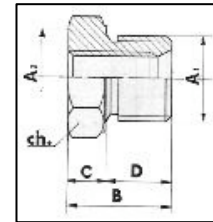
ch	d	D	C	B	A	ART.
14	5	10	30	35	1/8	9831
14	5	10	30	35	10x1	9832
17	6	14	39	46	12x1,5	9833
18	6,5	14	43	50	1/4	9834
18	7	14	43	50	14x1,5	9835
21	9	15	54	62	16x1,5	9836
22	9	15	54	62	3/8	9837
24	10	15	60	68	18x1,5	9838
27	12	18	63	71	1/2	9839

ch.	D	C	B	A2	A1	ART.
21	13	7	20	1/4	3/8	9351
22	13	7	20	1/4	18x1,5	9352
22	13	7	20	14x1,5	18x1,5	9353
25	14	9	23	14x1,5	20x1,5	9354
25	14	9	23	1/4	1/2	9355
25	14	9	23	14x1,5	1/2	9356
25	14	9	23	16x1,5	1/2	9357
25	14	9	23	3/8	1/2	9358
32	16	10	26	3/8	3/4	9359
32	16	10	26	18x1,5	3/4	9360
32	16	10	26	1/2	3/4	9361
40	20	10	30	1/2	1"	9362
40	20	10	30	3/4	1"	9363

RIDUZIONE MASCHIO – FEMMINA MALE-FEMALE EXTENSION ADAPTOR



RIDUZIONE MASCHIO – FEMMINA REDUCTION MALE-FEMALE



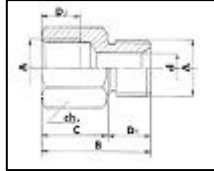
ch.	d	D2	D1	C	B	A2	A1	ART.
14	5	13	10	17	27	10x1	1/8	9941
18	5	14	10	20	30	1/4	1/8	9942
14	5	13	10	17	27	1/8	10x1	9943
18	5	14	10	20	30	1/4	10x1	9944
18	6	13	12	17	29	1/8	12x1,5	9945
18	6	13	12	17	29	10x1	12x1,5	9946
18	6	14	11	20	31	1/4	12x1,5	9947
18	7	13	12	17	29	1/8	1/4	9948
18	7	13	12	17	29	10x1	1/4	9949
18	7	13	12	17	29	12x1,5	1/4	9950
18	7	14	11	20	31	14x1,5	1/4	9951
22	7	13	12	22	34	3/8	1/4	9952
24	7	15	12	23	35	18x1,5	1/4	9953
27	7	16	12	25	27	1/2	1/4	9954
18	7	13	12	17	29	12x1,5	14x1,5	9955
18	7	14	11	20	31	1/4	14x1,5	9956
18	7	14	12	22	34	3/8	14x1,5	9957
21	9,5	14	12	20	32	1/4	16x1,5	9958
21	9,5	14	12	20	32	14x1,5	16x1,5	9959
22	9	14	12	22	34	3/8	16x1,5	9960
21	9,5	14	12	20	32	1/4	3/8	9961
21	9,5	14	12	20	32	14x1,5	3/8	9962
21	9,5	14	12	20	32	16x1,5	3/8	9963
24	9,5	15	12	25	37	18x1,5	3/8	9964
27	9,5	15	12	25	37	1/2	3/8	9965
22	10,5	14	13	20	33	1/4	18x1,5	9966
22	10,5	14	13	20	33	16x1,5	18x1,5	9967
24	10,5	15	13	23	36	3/8	18x1,5	9968
27	10,5	15	13	25	38	1/2	18x1,5	9969
25	12	13	14	25	39	1/4	1/2	9970
25	12	14	14	25	39	3/8	1/2	9971
25	12	15	14	25	39	18x1,5	1/2	9972
27	12	16	14	25	39	22x1,5	1/2	9973
34	12	16	14	32	46	3/4	1/2	9974
28	12,5	16	14	25	39	1/2	22x1,5	9975
32	16,5	14	17	25	42	3/8	3/4	9976
32	16,5	16	17	25	42	1/2	3/4	9977

PROLUNGHE - TAPPI



PROLUNGA TIPO CORTO MASCHIO-FEMMINA

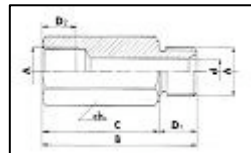
MALE-FEMALE EXTENSION ADAPTOR short type



ch.	d	D2	D1	C	B	A	ART.
18	7	14	11	21	32	1/4	8950
18	7	14	12	20	32	14x1,5	8951
22	9	15	12	23	35	16x1,5	8952
22	9,5	15	12	23	35	3/8	8953
24	10,5	17	13	23	36	18x1,5	8954
25	12	17	14	25	39	20x1,5	8955
27	12	17	14	25	39	1/2	8956
20	13	17	14	25	39	22x1,5	8957
34	16,5	24	17	32	49	3/4	8958

PROLUNGA TIPO LUNGO MASCHIO-FEMMINA

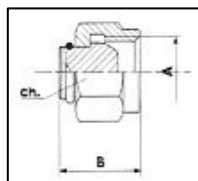
MALE-FEMALE EXTENSION long type



ch.	d	D2	D1	C	B	A	ART.
18	7	15	11	40	51	1/4	9311
18	7	15	12	40	52	14x1,5	9312
22	9	17	12,5	45	58	16x1,5	9313
22	9,5	17	12,5	45	58	3/8	9314
24	10,5	17	13	45	58	18x1,5	9315
27	12	17	14	45	59	20x1,5	9316
27	12	17	14	45	59	1/2	9317
28	12,5	17	14	45	59	22x1,5	9318
34	16,5	20	17	58	75	3/4	9319

TAPPO FEMMINA

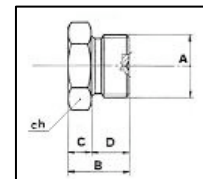
FEMALE PLUG



ch.	B	A	ART.
14	13	1/8	9171
14	13	10x1	9172
17	20	1/4	9173
18	20	14x1,5	9174
21	22	16x1,5	9175
21	22	3/8	9176
22	23	18x1,5	9177
25	25	20x1,5	9178
25	25	1/2	9179
27	25	22x1,5	9180
32	28	3/4	9181

TAPPO ESAGONALE MASCHIO

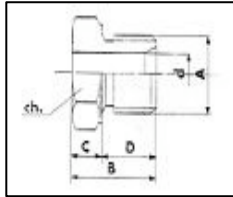
MALE EXAGONAL PLUG



ch.	D	C	B	A	ART.
14	9	6	15	1/8	9160
14	9	6	15	10x1	9161
17	10	6	16	12x1,5	9162
18	11	7	18	1/4	9163
18	11	7	18	14x1,5	9164
21	12	7	19	16x1,5	9165
22	12	7	19	3/8	9166
24	12	8	20	18x1,5	9167
25	13	8	21	20x1,5	9168
27	13	8	21	1/2	9169
28	13	8	21	22x1,5	9170
32	15	10	25	3/4	9190

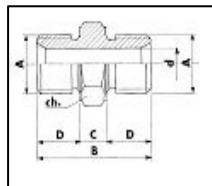
9

MEZZO NIPPLO A SALDARE
WELDABLE HALF-ADAPTOR



ch.	d	D1	C	B	A	ART.
18	7,5	11,5	8	19,5	1/4	9320
18	7,5	11,5	8	19,5	14x1,5	9321
21	9	12	8	20	16x1,5	9322
21	9,5	13	8	21	3/8	9323
22	10	13	9	22	18x1,5	9324
25	12	14	9	23	20x1,5	9325
25	12,5	14	9	23	1/2	9326
27	13	14	9	23	22x1,5	9327
32	17	17	10	27	3/4	9328

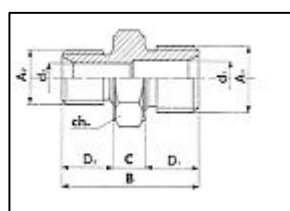
NIPPLO GAS
ADAPTOR GAS



ch.	d	D	C	B	A	ART.
14	5	10	6	26	1/8	8906
18	7	11,5	7	30	1/4	8907
21	10	13	8	34	3/8	8908
25	12	14	8	36	1/2	8909
28	14,5	15	9	39	5/8	8910
32	17,5	16	10	42	3/4	8911
40	22	20	10	50	1"	8912
14	5	10	6	26	10x1	8913
17	7	11,5	7	30	12x1,5	8914
18	7,5	11,5	7	30	14x1,5	8915
21	9,5	13	8	34	16x1,5	8916
22	10,5	13	8	34	18x1,5	8917
25	12	14	8	36	20x1,5	8918
27	13	15	9	39	22x1,5	5919

9

NIPPLO RIDUZIONE MASCHIO - MALE-MALE ADAPTOR

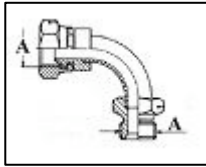


ch.	d2	d1	D2	D1	C	B	A2	A1	ART.
14	5	5	10,5	10,5	6	27	1/8	10x1	9905
18	5	6	10,5	11,5	7	29	1/8	1/4	9906
18	5	6	10,5	11,5	7	29	10x1	1/4	9907
18	6	6	11	11,5	7	29,5	12x1,5	1/4	9908
18	5	6	10,5	11,5	7	29	1/8	14x1,5	9909
18	5	6	10,5	11,5	7	29	10x1	14x1,5	9910
18	6	7	11	11,5	7	29,5	12x1,5	14x1,5	9911
18	7	7	11,5	11,5	7	30	1/4	14x1,5	9912
21	7	9	11,5	12,5	7,5	31,5	1/4	16x1,5	9913
21	7	9	11,5	12,5	7,5	31,5	14x1,5	16x1,5	9914
21	5	9	10,5	12,5	7,5	30,5	1/8	3/8	9915
21	6	9	11	12,5	7,5	31	12x1,5	3/8	9916
21	7	9	11,5	12,5	7,5	31,5	1/4	3/8	9917
21	7	9	11,5	12,5	7,5	31,5	14x1,5	3/8	9918
21	9	9	13	13	8	34	16x1,5	3/8	9919
22	7	10	12	13	8	33	1/4	18x1,5	9920
22	7	10	12	13	8	33	14x1,5	18x1,5	9921
22	9	10	13	13	8	34	16x1,5	18x1,5	9922
22	10	10	13	13	8	34	3/8	18x1,5	9923
25	7	11	12	14	8	34	1/4	20x1,5	9924
25	9	11	13	14	8	35	16x1,5	20x1,5	9925
25	9,5	11	13	14	8	35	3/8	20x1,5	9926
25	10	11	13	14	8	35	18x1,5	20x1,5	9927
25	7	12	12	14	8	34	1/4	1/2	9928
25	7	1/2	12	14	8	34	14x1,5	1/2	9929
25	9	1/2	13	14	8	35	16x1,5	1/2	9930
25	9,5	12	13	14	8	35	3/8	1/2	9931
27	9,5	12	13	14	8	35	3/8	1/2	9932
25	10	12	13	14	8	35	18x1,5	1/2	9933
27	10	12	13	14	8	35	18x1,5	1/2	9934
25	11	12	14	14	8	36	20x1,5	1/2	9935
27	9,5	12	13	14	8	35	3/8	22x1,5	9936
25	10	12	13	14	8	35	18x1,5	22x1,5	9937
27	12	12	14	14	8	36	20x1,5	22x1,5	9938
27	12	12	14	14	8	36	1/2	22x1,5	9939
32	9,5	16,5	13	16,5	9,5	39	3/8	3/4	9940
32	10	16,5	13	16,5	9,5	39	18x1,5	3/4	9900
32	12	16,5	14	16,5	9,5	40	1/2	3/4	9901
32	13	16,5	14	16,5	9,5	40	22x1,5	3/4	9902
32	13	16,5	14	16,5	9,5	40	5/8	3/4	9903
32	16,5	16,5	16,5	16,5	10	43	26x1,5	3/4	9904



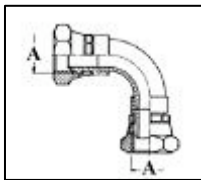
GIUNZIONI ORIENTABILI

GIUNZIONE MASCHIO/FEMMINA 90° ADAPTOR 90° MALE/FEMALE



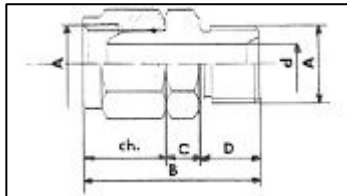
A	ART.
1/4	9301
14x1.5	9302
16x1.5	9303
3/8	9304
18x1.5	9305
1/2	9306
22x1.5	9307
3/4	9308

GIUNZIONE FEMMINA/FEMMINA 90° ADAPTOR 90° FEMALE/FEMALE



A	ART.
1/4	9291
14x1.5	9292
3/8	9293
18x1.5	9294
1/2	9295
22x1.5	9296
3/4	9297

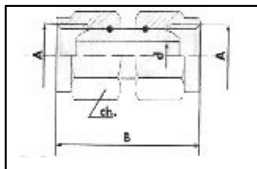
GIUNZIONE MASCHIO/FEMMINA FILETT.GAS e METR. METRIC AND GAS MALE/FEMALE ADAPTOR



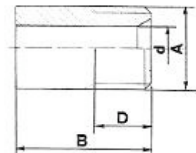
ch	d	D	C	B	A	ART.
17	7	11.5	7	35	1/4	9111
18	7	11.5	7	36	14x1.5	9112
21	9	12.5	7	38	16x1.5	9113
21	9	12.5	7	38	3/8	9114
22	9	13	7	39	18x1.5	9115
25	11.5	14	8	44	1/2	9116
27	13	14	9	44	22x1.5	9117
32	16	17	10	52	3/4	9118

9

GIUNZIONE FEMMINA/FEMMINA FILETT.GAS E METR. METRIC AND GAS FEMALE/FEMALE ADAPTOR



GIUNZIONE DA SALDARE TONDA WELDABLE ADAPTOR



ch	d	B	A	ART.
17	5.5	36	1/4	9141
18	5.5	36	14x1.5	9142
21	8	40	16x1.5	9143
21	8	40	3/8	9144
22	9	40	18x1.5	9145
25	11	44	1/2	9146
27	13	44	22x1.5	9147
32	15	54	3/4	9148

ch	d	D	B	A.	ART.
13	7	12	27	1/4	9331
14	7	12	27	14x1.5	9332
16	9	13	30	16x1.5	9333
17	9.5	13	30	3/8	9334
18	10	14	30	18x1.5	9335
20	12.5	14	32	20x1.5	9336
20	12.5	14	32	1/2	9337
22	13	14	35	22x1.5	9338
26	16.5	17	36	3/4	9339

RONDELLE



BONDED ALLUMINIUM

BONDED SEALS

ART.	Rondelle in Alluminio			
	Spessore mm	Diam. Est.	Diam. Int.	Sigla n. RA Φ
949	1	10	6,2	6
950	1	13	8,2	8
951	1,5	16	10,2	1/8
952	1,5	16	10,2	10
953	1,5	18	12,2	12
954	1,5	19	13,3	1/4
955	1,5	20	14,2	14
956	1,5	22	16,2	16
957	1,5	22	16,7	3/8
958	1,5	24	18,2	18
959	1,5	26	20,2	20
960	1,5	27	21	1/2
961	1,5	28	22,2	22
962	1,5	29	23	5/8
963	1,5	30	24,2	24
964	1,5	32	26,2	26
965	1,5	33	26,5	3/4
966	1,5	34	28,2	28
967	1,5	36	30,2	30
968	1,5	40	32,2	32
969	1,5	41	33,4	1"

ART.	Rondelle in Rame				ART.
	Sigla n. RR Φ	Diam. Int.	Diam. Est.	Spessore mm	
	6	6,2	10	1	978
	8	8,2	13	1	979
	1/8	10,2	16	1,5	980
	10	10,2	16	1,5	981
	12	12,2	18	1,5	982
	1/4	13,3	19	1,5	983
	14	14,2	20	1,5	984
	16	16,2	22	1,5	985
	3/8	16,7	22	1,5	986
	18	18,2	24	1,5	987
	20	20,2	26	1,5	988
	1/2	21	27	1,5	989
	22	22,2	28	1,5	990
	5/8	23	29	1,5	991
	24	24,2	30	1,5	992
	26	26,2	32	1,5	993
	3/4	26,5	33	1,5	994
	28	28,2	34	1,5	995
	30	30,2	36	1,5	996
	32	32,2	40	1,5	997
	1"	33,4	41	1,5	998

Scatola Rondelle Alluminio o Rame composta da:



ART.947

N.	Diam.	N.	Diam.
50	8	50	20
50	10	50	1/2
50	12	50	22
50	1/4	50	5/8
50	14	50	24
50	16	50	3/4
50	3/8	20	1"
50	18		



ART.948

INVERTITORE 4 VIE
4 WAYS DIVERTER FLOW



ATTACCHI	P.N. atm	ART.
3/8	150	9260
1/2	150	9261
3/4	150	9262

DISTRIBUTORE DI FLUSSO A 3 VIE
3 WAYS DIVERTER FLOW



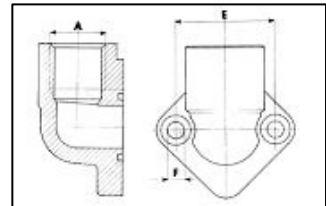
ATTACCHI	P.N. atm	ART.
3/8	150	9255
1/2	150	9256
3/4	150	9257

RUBINETTI A 2 VIE
2 WAYS BALL TAPS



ATTACCHI	P.N. atm	ART.
1/4	300	9250
3/8	250	9251
18x1.5	250	9252
1/2	250	9253

FLANGE PER POMPE
FLANGES FOR PUMPS



A	E	OR	ART.
3/8	30	121	8927
18x1.5	30	121	8928
1/2	30	121	8929
3/8	40	132	8930
18x1.5	40	132	8931
1/2	40	132	8932
3/4	40	132	8933
3/4	51	137	8934
3/4	56	137	8935

INNESTI RAPIDI



INNESTI RAPIDI A VALVOLA

QUICK COUPLERS VALVE TYPE



TIPO	GAS	ART.
MASCHIO	1/4"	9100
FEMMINA	1/4"	9101
MASCHIO	3/8"	9102
FEMMINA	3/8"	9103
MASCHIO	1/2"	9104
FEMMINA	1/2"	9105
MASCHIO	3/4"	9106
FEMMINA	3/4"	9107
MASCHIO	1"	9108
FEMMINA	1"	9109

INNESTI RAPIDI A SFERA

QUICK COUPLERS BALL TYPE



TIPO	GAS	ART.
MASCHIO	1/2"	9410
FEMMINA	1/2"	9411

INNESTI RAPIDI A VALVOLA "PUSH-PULL"

QUICK COUPLERS "PUSCH-PULL" BALL TYPE



TIPO	GAS	ART.
MASCHIO	1/2"	9420
FEMMINA	1/2"	9421

TAPPO PROTEZIONE PARAPOLVERE PER INNESTI RAPIDI

ANTI DUST CAPS FOR QUICK COUPLERS



MASCHIO	3/8"	ART .9063
MASCHIO	1/2"	ART.9030



FEMMINA	3/8"	ART.9064
FEMMINA	1/2"	ART.9031